

ARDEN P.U.D. POD I NORTH

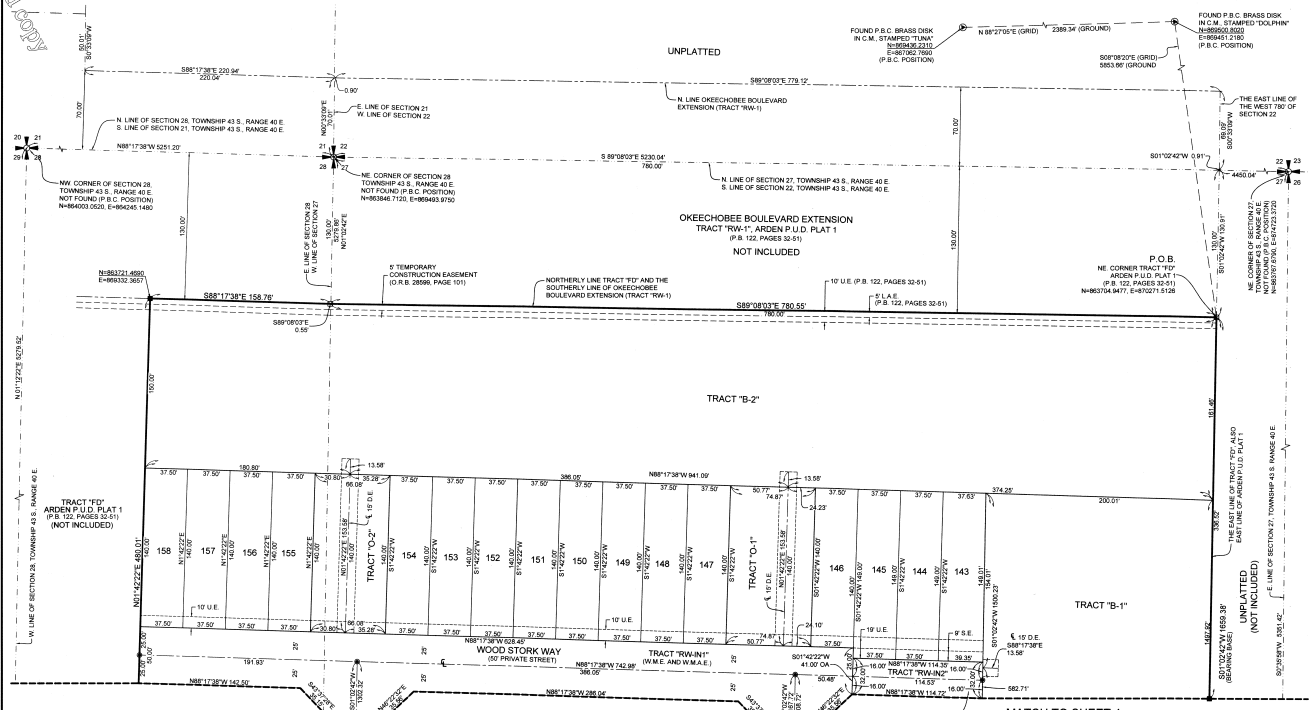
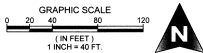
BEING A REPLAT OF A PORTION OF TRACT "FD", ARDEN P.U.D. PLAT 1, AS RECORDED IN PLAT BOOK 122, PAGES 32 THROUGH 51, PUBLIC RECORDS OF PALM BEACH COUNTY, FLORIDA, AND LYING IN SECTIONS 27 AND 28, TOWNSHIP 43 SOUTH, RANGE 40 EAST, PALM BEACH COUNTY, FLORIDA.

56

COORDINATE NOTE:
 STATE PLANE COORDINATES SHOWN ARE GRID DATUM, NAD 83 1990
 ADJUSTMENT, FLORIDA EAST ZONE, COORDINATE SYSTEM 1983 STATE
 PLANE, TRANSVERSE MERCATOR PROJECTION
 LINEAR UNIT = US SURVEY FEET
 ALL DISTANCES ARE GROUND
 SCALE FACTOR = 0.99996219
 GROUND DISTANCE X SCALE FACTOR = GRID DISTANCE
 BEARINGS AS SHOWN HEREON ARE GRID DATUM, NAD 83 1990
 ADJUSTMENT, FLORIDA EAST ZONE.

PREPARING SURVEYOR & MAPPER'S STATEMENT

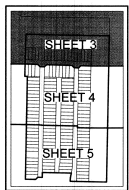
THIS INSTRUMENT WAS PREPARED BY LESLIE C. BROTTE, P.S.M. OF MICHAEL B. SCHORAH AND ASSOCIATES, INC., 1900 FOREST HILL BOULEVARD, SUITE 206, WEST PALM BEACH, FLORIDA, 33406.



MATCH TO SHEET 4

MATCH TO SHEET 4

SHEET 3 OF 5



KEY MAP
 NOT TO SCALE



MICHAEL B. SCHORAH & ASSOCIATES, INC.
 1900 FOREST HILL BLVD., SUITE 206
 WEST PALM BEACH, FLORIDA, 33406
 ESP 2438 TEL: (561) 988-0080 FAX: (561) 842-9726 LHM 2438

ARDEN P.U.D. POD I NORTH

This is Not a certified copy